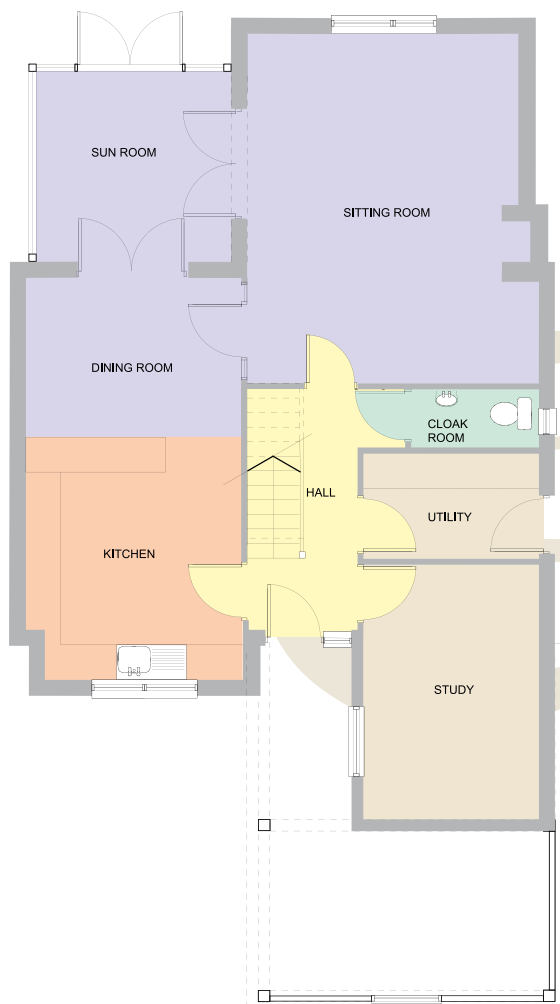
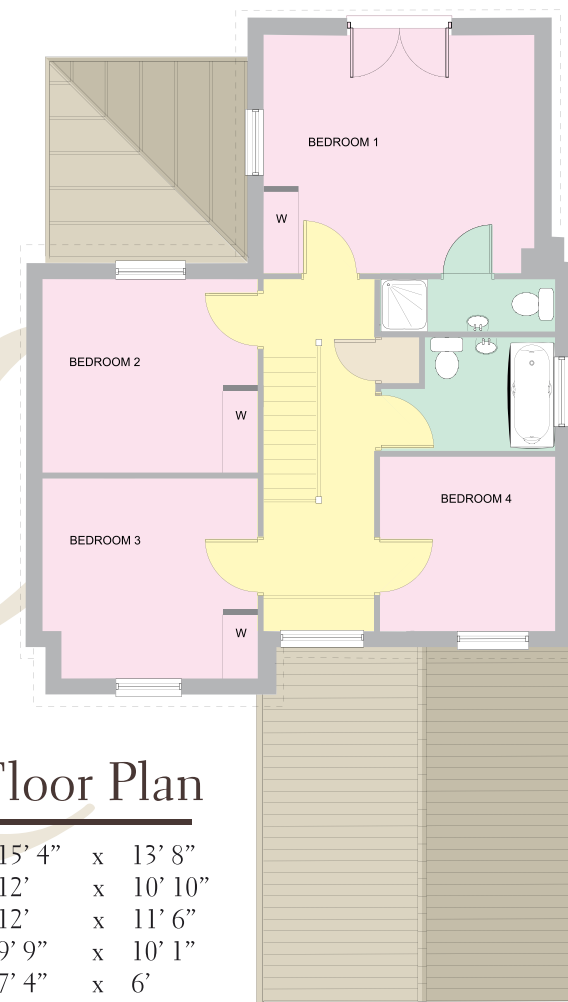


The Cedar (Plot 3)



Ground Floor Plan

SUNROOM	3365mm	x	3365mm	11'	x	11'
SITTING ROOM	4677mm	x	6025mm	15' 4"	x	19' 9"
DINING	3665mm	x	2720mm	12'	x	8' 11"
KITCHEN	3665mm	x	4200mm	12'	x	13' 9"
UTILITY	2985mm	x	1800mm	9' 9"	x	6' 2"
STUDY	2985mm	x	4123mm	9' 9"	x	13' 6"



First Floor Plan

BEDROOM 1	4675mm	x	175mm	15' 4"	x	13' 8"
BEDROOM 2	3665mm	x	3320mm	12'	x	10' 10"
BEDROOM 3	3665mm	x	3505mm	12'	x	11' 6"
BEDROOM 4	2985mm	x	3075mm	9' 9"	x	10' 1"
BATHROOM	2240mm	x	1852mm	7' 4"	x	6'

It is not possible in a brochure of this nature to do more than give a general impression of the range, quality and variety of the properties that we have on offer. The artist's impressions, floor plans, layouts and measurements are included for guidance only. Measurements may vary by plus or minus two inches. The homes may vary in terms of elevational design details, position/size of garage, and materials used. Such changes are due to our commitment to create homes of individual character.

1 East Bank House, Tide Mill Way, Woodbridge, IP12 1BY
 Telephone: 01394 610200
 Fax: 01394 610201
 E-mail: enquiries@ashbylawrence.co.uk
www.ashbylawrence.co.uk