

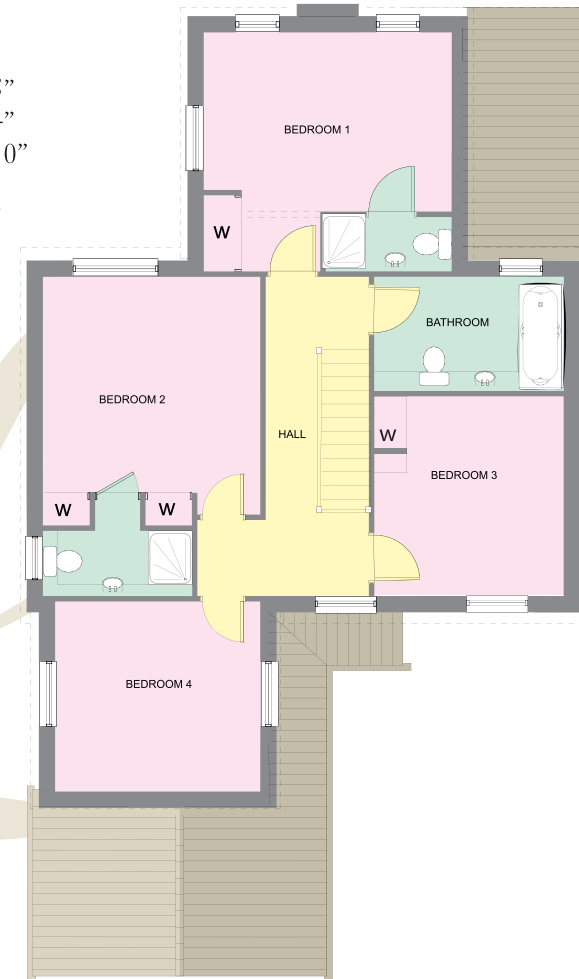
The Oak (Plot 1)

Ground Floor Plan



SITTING ROOM	6365mm	x	4400mm	20' 10"	x	14' 5"
DINING	4000mm	x	4985mm	13' 1"	x	16' 4"
KITCHEN	3775mm	x	4530mm	12' 4"	x	14' 10"
UTILITY	3410mm	x	2135mm	11' 2"	x	7'
STUDY	2360mm	x	2960mm	7' 8"	x	9' 8"

First Floor Plan



BEDROOM 1	4550mm	x	3300mm	14' 11"	x	10' 9"
BEDROOM 2	4000mm	x	4010mm	13' 1"	x	13' 2"
BEDROOM 3	3410mm	x	3680mm	11' 2"	x	12'
BEDROOM 4	3775mm	x	3500mm	12' 4"	x	11' 5"
BATHROOM	3410mm	x	2135mm	11' 2"	x	7'

It is not possible in a brochure of this nature to do more than give a general impression of the range, quality and variety of the properties that we have on offer. The artist's impressions, floor plans, layouts and measurements are included for guidance only. Measurements may vary by plus or minus two inches. The homes may vary in terms of elevational design details, position/size of garage, and materials used. Such changes are due to our commitment to create homes of individual character.

1 East Bank House, Tide Mill Way, Woodbridge, IP12 1BY
 Telephone: 01394 610200
 Fax: 01394 610201
 E-mail: enquiries@ashbylawrence.co.uk
www.ashbylawrence.co.uk